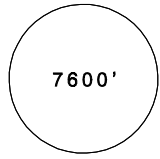
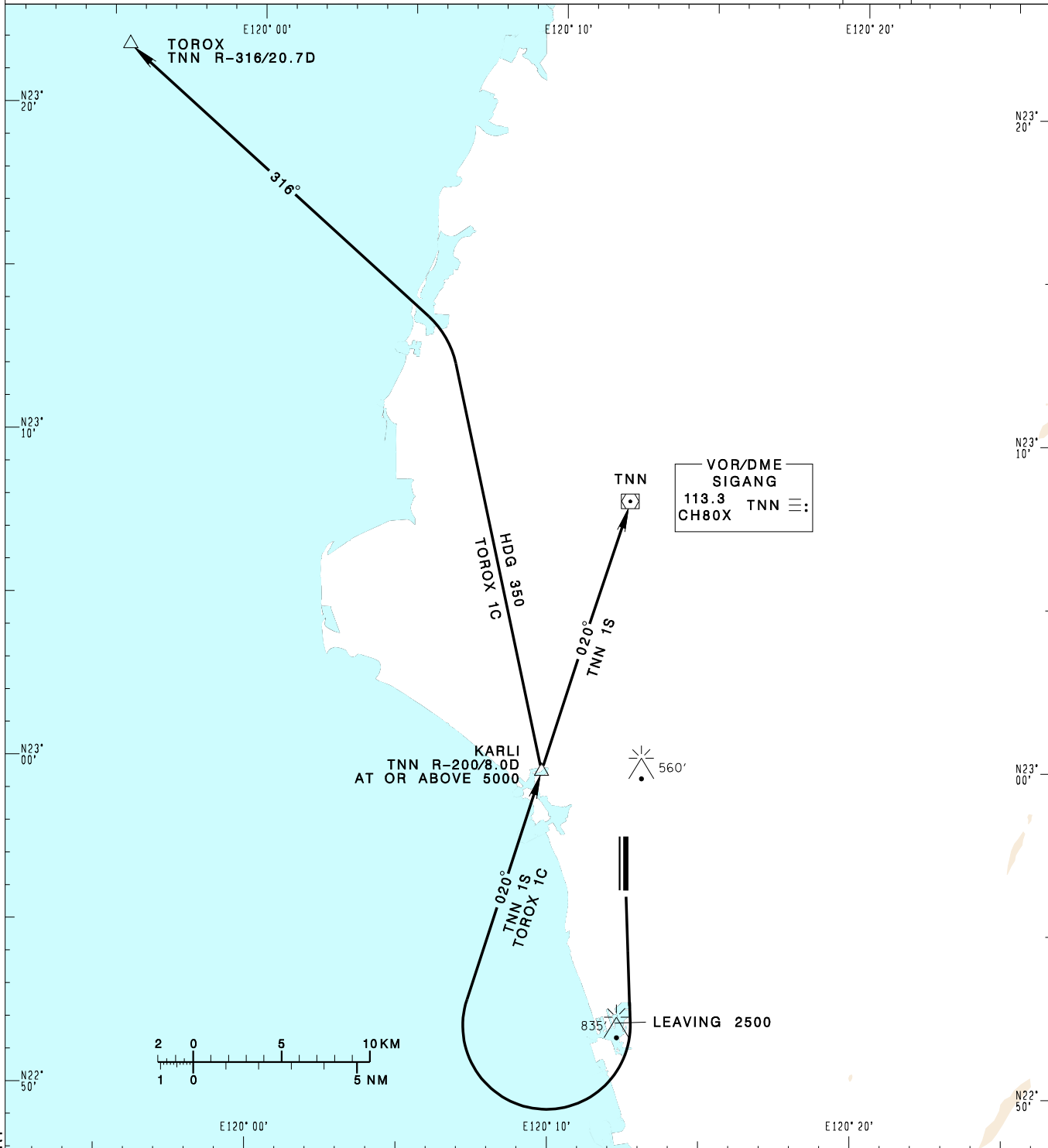


**臺南機場**  
TAINAN AD

RCNN SID  
TNN 1S(RWY18L)  
TOROX 1C(RWY18L)

KAOSIUNG APP 124.7 363.8	TAINAN TWR 118.4 236.6 126.18	GROUND 121.6	ATIS NIL	VAR 4° W-2023	 7600' MSA ARP 25NM		
Apt Elev: 64'		Trans Level: FL130				Trans Alt: 11,000'	
BEARINGS ARE MAGNETIC; DISTANCES ARE NAUTICAL MILES; ELEVATIONS, HEIGHTS IN FEET							



CHANGES: NEW CHART

**SIGANG ONE SIERRA DEPARTURE**  
Climb on RWY HDG until leaving 2,500ft, turn right to track TNN R-200 to KARLI then TNN to join airway, cross KARLI at or above 5,000ft.

**TOROX ONE CHARLIE DEPARTURE**  
Climb on RWY HDG until leaving 2,500ft, then turn right to track TNN R-200 to KARLI, cross KARLI at or above 5,000ft, then turn left HDG 350 to track TNN R-316 to TOROX to join airway.

**NOTE**

1. TNN 1S, TOROX 1C:  
Minimum climb gradient required:  
3.6%(220ft/NM) until 1,200ft.
2. ATS surveillance required.